



## **2 Year Old Funding Questions**

### **Everything you need to know about 2 year old funding**

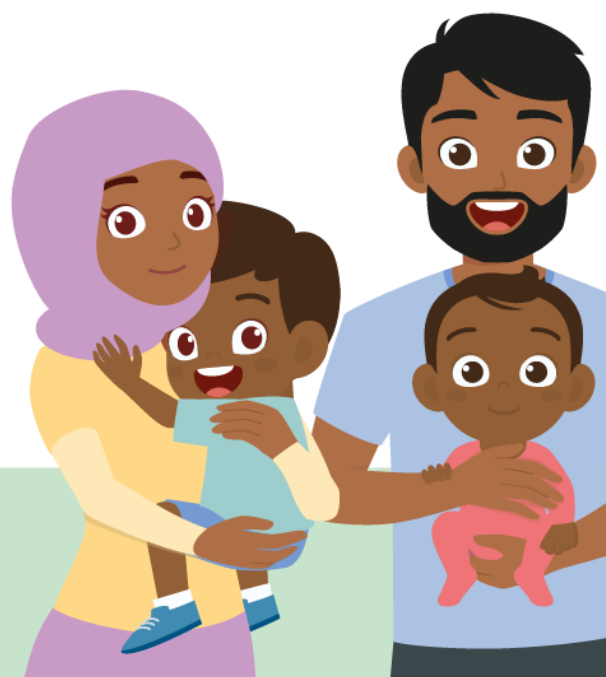
#### **Can my 2-year-old get a funded place?**

If you are claiming any of these benefits and can provide the relevant proof, the answer is yes:

- Universal Credit - if you and your partner have a combined income from work of less than £15,400 a year after tax
- Tax credits and you have an annual income of under £16,190 before tax
- Income Support
- Income-based Jobseeker's Allowance (JSA)
- Income-related Employment and Support Allowance (ESA)
- The guaranteed element of State Pension Credit
- Support through Part VI of the Immigration and Asylum Act 1999
- Working Tax Credit 4-week run on (the payment you get when you stop qualifying for Working Tax Credit)

Two-year olds are also eligible if they:

- Are in Care
- Are Leaving Care in Special Guardianship, Adoption or Residence Order
- Receive Disability Living Allowance
- Have an Education, Health and Care Plan
- Are a child of a non-UK family with no access to public funds who are on a low income and have limited savings





# *2 year old funding: Frequently Asked Questions*

## **How do I apply for a funded place?**

The easiest way is to apply online here [2 year old Early Years Education online application](#)

If you are not found eligible, you will need to contact us to talk about your application. You will then be asked to send us some information (universal credit statement, DLA letter etc.)

## **How long will it take and how will I know if my application was successful?**

If you apply online and are eligible, then you will find out straight away. You will be given a 2 year old funding code and will receive an automated email (which may go to your junk folder)

If you are not found eligible, then you will still be issued a code. You will receive an email asking you to contact us to have a look at your application. When we receive your application, we will also try to contact you, to see if we are able to make you eligible.

## **How many hours is a funded place for?**

Eligible children are entitled to 15 hours a week of funded childcare during school [term dates](#). Some childcare providers/settings may be able to spread the hours over a year if you ask them. If you meet the criteria, your child can start the term after their second birthday (or at any point after).

## **What happens after I apply?**

If your child is eligible you will receive an email with an eligibility code for you to print or save.

You can then arrange to visit a childcare provider, who can tell you if they can provide a funded place.

The provider could be a nursery, pre-school or childminder. Some schools may also take two-year olds if you want to check with them.





# *2 year old funding: Frequently Asked Questions*

## **If I need help to find childcare can you provide it?**

You can search for local providers here [Your childcare options | Family Information Service](#) . If you would like to, you can call and speak to a member of the Childcare Brokerage Team who will be happy to help you. We can also talk to providers for you. You can find their details here [Childcare Brokerage \(Access and Inclusion Team\)](#)

## **How can my child attend for the funded hours?**

Parents must speak to their childcare provider about how the funded places can be taken at the provision. Providers can differ from the times in the day they are open and offer funded places. Providers can offer funding as 38 weeks during term time or school holidays, or across the whole year which is called a 'stretched offer'. Some providers may do both, but it is their choice.

## **Can I take funded hours at more than one provider?**

Yes, Parents can split funded hours between multiple providers, but no more than at two sites in one day. This can be between any type of provider. Parents will need to decide how many hours their child attends for at each site as providers must agree to this.

## **Do I have to sign anything for funded hours with my provider?**

Yes, for the funded hours it is a legal requirement that all families must sign the Parental Declaration that will be given to you by your childcare provider. On this form you will fill in your own personal details as well as your child's. You will also need to advise how many hours you wish your provider to claim for your child. Children must attend for the agreed number of funded hours you have asked your provider/s to claim, or the funded hours will be reduced or stop if non-attendance happens regularly.





# *2 year old funding: Frequently Asked Questions*

## **What happens if I move or want my child to go to a childcare provider not in Buckinghamshire?**

Buckinghamshire Council cannot fund 2-year olds that are attending childcare providers outside of Buckinghamshire. You will need make an application to the council for the area that the childcare provider is located in to confirm eligibility and funding.

A 2 year old who lives outside of Buckinghamshire but who is attending a childcare provider in Buckinghamshire, will need to [make an application](#) to confirm eligibility. If the family is eligible, we will pay for your child to attend a Buckinghamshire childcare provider.

## **What happens if I get back into work and no longer claim the benefits listed?**

The good news is, that once you have your 2 year funding code, this will not be taken away (even if your situation changes)

## **What if I wish to take up non funded hours or services at a provider?**

If your child does attend for hours that are not part of funded sessions supplied by the provider, you will be charged for these hours. Items such as food, nappies, trips, clothing and services, the provider is allowed to charge for if used by children. These charges are set by the provider.

## **What about invoices and charges?**

Providers must make it clear on invoices the number of funded hours taken for the invoice period.

For additional charges for non-funded hours, consumables and services the provider must again clearly outline for what you have been charged for in the period. This is so parents can clearly identify they are receiving their child's funded hours as initially agreed with the provider.

Providers cannot charge top ups on the funded hours (this is the difference between the funding the provider receives and what they normally charge)





## Early Years Service

# 2 year old funding and beyond - what comes next?

Now that you have been found eligible for 2 year old funding, you will need to search for a nursery, childminder or pre-school and give them your code.



If you need help with finding a nursery childminder or pre-school then you can contact our childcare brokerage team on 01296 387000 or fill in the online request for help form, which can be found here: [Get help finding childcare from the Brokerage Service](#)



Your child can start using their funding at your chosen childcare setting from the date given in your confirmation email. They can use this funding until the term after they turn 3 years old.



Some children may be eligible for 30 hours of funded childcare per week or 22 hours per week all year round. You will need to check if you are eligible and apply online here [30 hours childcare - GOV.UK](#) If you are eligible, you will need to reconfirm this every 3 months.



All children, the term after they turn 3 years old, are eligible for 15 hours of funded childcare per week term time or 11 hours per week all year round. You do not have to apply for this and do not need a code and you do not need to reapply each term. This funding will stay with your child until they go to school.

### School

You will need to make an application for your child to start primary school.

You can find more information on how and when to apply here: [School admissions | Buckinghamshire Council](#)

### Contact Us

Access & Inclusion Team, Early Years Service  
01296 38 7000  
[2yearoldfunding@buckinghamshire.gov.uk](mailto:2yearoldfunding@buckinghamshire.gov.uk)  
[brokerage@buckinghamshire.gov.uk](mailto:brokerage@buckinghamshire.gov.uk)

